

## About The Accelerated Cure Project for Multiple Sclerosis

**Accelerated Cure Project for Multiple Sclerosis** is a national nonprofit organization dedicated to curing MS by determining its causes. Focused primarily on *accelerating* the pace of MS breakthroughs, the Accelerated Cure Project seeks to remove obstacles to investigating the causes of MS, and encourages collaboration between research organizations and clinicians.

Its major success has been the creation of a large-scale, multidisciplinary MS Repository of blood samples and data from people with MS and matched controls. With the help of funds raised by efforts like Music to Cure MS, samples are being collected at sites across the United States. These samples are currently being used by over 63 studies throughout the world.

In April 2012, ACP and the MassGeneral Institute for Neurodegenerative Disease (MIND) launched the Multiple Sclerosis Discovery Forum (MSDF)—an information portal and interactive virtual community that educates and connects investigators who study MS and other demyelinating disorders of the central nervous system.

**Multiple Sclerosis**, or MS, is a chronic demyelinating disorder of the central nervous system affecting over 400,000 people in the US and 2 million worldwide. MS commonly results in severe disability: debilitating fatigue, loss of bladder and bowel control, the inability to walk, impaired vision or blindness, cognitive dysfunction, and other unpredictable impairments. No one knows what causes Multiple Sclerosis, there is no known cure, and treatments are modest at best.

For more information about the Accelerated Cure Project or to make a corporate or individual contribution, call 781/487-0008, or visit [www.acceleratedcure.org](http://www.acceleratedcure.org).



## The 11th Annual Accelerated Cure Project Benefit Concert

*A concert of classical vocal music  
to benefit the*  
**Accelerated Cure Project  
for Multiple Sclerosis**

Park Avenue Congregational Church  
50 Paul Revere Road  
Arlington, MA

*Music*  
to **CURE MS**





**Sunday, October 27, 2013, 3 - 5 PM**



**LICENSED & INSURED**  
Master Lic. #20580A

**24 HOUR SERVICE**





**GIBBONS ELECTRIC**

189 Broadway  
Arlington, MA 02474  
Phone: 781.648.7771  
Fax: 781.648.7772

[www.GibbonsElectric.com](http://www.GibbonsElectric.com)



**PLAY TIME**

283 Broadway  
Arlington, MA 02474  
(781) 648-3230



**Arlington Fuel Oil Co. Inc.**

Fuel Oil Delivery • Service • Installation

Specializing In All Your Heating & Hot Water Needs.

*Family owned and operated for four generations.*



## Program

Una voce poco fa, *Il Barbiere di Siviglia* - Gioacchino Rossini  
Sophie Michaux, Mark McNeill

Je dis que rien ne m'épouvante, *Carmen* - Georges Bizet  
Laura Hansen, Mark McNeill

Io son l'umile ancella, *Adriana Lecouvreur* - Francesco Cilea  
Karen Amlaw, Mark McNeill

O zittre nicht, *Die Zauberflöte* - Wolfgang Amadeus Mozart  
Alyssa Kugler, Mark McNeill

Come dal ciel precipita, *Macbeth* - Giuseppe Verdi  
Miles Rind, Mark McNeill

Habanera, *Carmen* - Georges Bizet  
Janine Wanée, Mark McNeill

*Liebhaber in allen Gestalten* - Franz Schubert  
Marion Leeds Carroll, James Hay

Song to the moon, *Rusalka* - Antonín Dvořák  
Sangeetha Vandeyar Appavoo, Mark McNeill

## Intermission

Schlummert Ein, BWV 82 (*Ich habe genug*) - Johann Sebastian Bach  
Elizabeth Anker, Seele Musicale (*Jagan-Nath Khalsa and friends*)

Suicidio, *La Gioconda* - Amilcare Ponchielli  
Karen Amlaw, Mark McNeill

Dove Sono, *Le Nozze di Figaro* - Wolfgang Amadeus Mozart  
Kimberly States, Mark McNeill



*Fitness First of Arlington  
471 Massachusetts Ave  
Supports Music to Cure MS*



## **Pet-Estrian Services**

*Complete Pet Sitting Care*

617 484-2489

E-mail: [PetEstrian@aol.com](mailto:PetEstrian@aol.com)  
[www.Pet-Estrian.com](http://www.Pet-Estrian.com)



508-997-0160  
781-646-6190



## **Minute Man Repair**

*Power Service Specialists*

**SALES and SERVICE**  
on Lawn and Snow Equipment  
Chain Saws - Power Equipment

*-- and just about anything with an engine --*

111 Massachusetts Ave.


Arlington, Mass. 02474  
Dartmouth, Mass.



## **BÉLANGER PIANO SERVICES**

Tel: (617) 484-4678  
[vbela@mit.edu](mailto:vbela@mit.edu)


VICTOR BÉLANGER

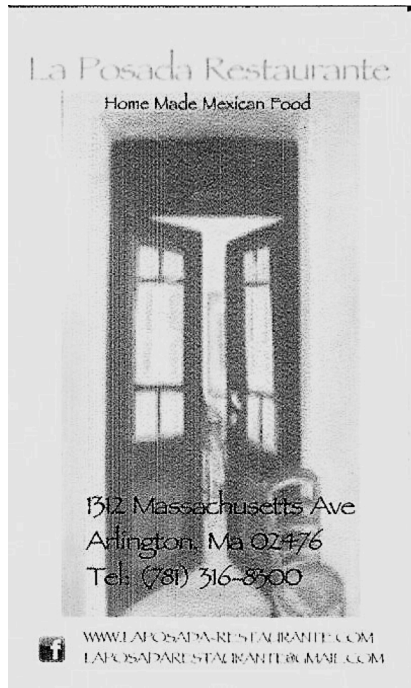


**JOHN J. DUNN, JR.**  
*Registered Optician*

TEL: 781.646.7776  
180 MASSACHUSETTS AVE  
ARLINGTON, MA 02474

MON/WED/FRI 9-5  
TUES/THURS 9-6  
SATURDAY 9-1





- Das verlassene Mägdlein, *Mörke-Lieder* - Hugo Wolf
- Meine Liebe ist grün wie der Fliederbusch, *Junge Lieder I* - Johannes Brahms
- Sonya Taaffe, Mark McNeill

Riddle Trio, *The Scarlet Pimpernel* - Frank Wildhorn/Nan Knighton  
Tom Frates, Kate Meifert, Ethan Butler, James Hay

Bring him home, *Les Miserables* - Schönberg/Kretzmer  
Ethan Butler, James Hay

- I loved, *Jacques Brel Is Alive and Well and Living in Paris* - Jacques Brel
- The hills are alive, *The Sound of Music* - Rodgers/Hammerstein
- Julie Poole Martini, James Hay



*Our concert this year ~~~*

*This year's concert preparations have gone through changes: Barbara Quintiliani, the brave internationally-famed soprano who sings in spite of MS, has had to withdraw at the last minute due to an MS flare. We'll continue our efforts to help her and others who suffer from this disabling, incurable disease!*

*Please follow translations and program notes on our separate sheets. Enjoy the program!*

*Marion Leeds Carroll, concert organizer*



Savoyard Light Opera Company  
presents *The Mikado*, featuring artists from this year's concert!

# WORCESTER CHAMBER MUSIC SOCIETY



2013-2014  
SEASON 8



## RHAPSODY

Friday, November 15, 7:30 PM      Saturday, November 16, 7:30 PM  
Unitarian Church      First Baptist Church  
9 Ayer Road, Harvard      111 Park Ave, Worcester  
*With guest Demetrios Karamintzas, oboe*  
*Performing works by Britten, Loeffler, Berlioz and Beethoven*

## CAFÉ CONCERTS

Thursday, January 9 & March 14  
6:30 PM Dinner Seating / 8:00 PM Concert  
Nuovo Restaurant, 92 Shrewsbury St, Worcester

## ENCHANTED MUSIC\*

Friday, April 4, 7:30 PM      Saturday, April 5, 8:00 PM  
Congregational Church      Tuckerman Hall  
30 Grafton Common, Grafton      10 Tuckerman St, Worcester  
*With guest Randall Hodgkinson, piano*  
*Performing works of Weber, Shostakovich and Franck*  
*\* In collaboration with Music Worcester*



Tickets and info at:  
508-217-4450 or [www.worcesterchambermusic.org](http://www.worcesterchambermusic.org)

# FRANCESCA'S

## KITCHEN

781 648-0005

162 Massachusetts Ave  
Arlington, MA

the  
madrona tree



a local eatery

the madrona tree  
*eat like you give a damn*

tanya abraham  
owner

315 broadway  
arlington, ma 02474

781.859.5551  
[tanya@themandronatree.com](mailto:tanya@themandronatree.com)  
[themandronatree.com](http://themandronatree.com)  
[facebook.com/themandronatree](https://facebook.com/themandronatree)

# LAKOTA BAKERY

ARLINGTON, MA





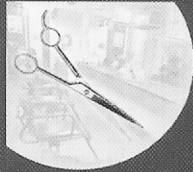
645 Mass Avenue  
Arlington, MA



# NEW DIMENSIONS

IN·HAIR

906 MASS. AVE., ARLINGTON, MA 02476 (781) 646-2535



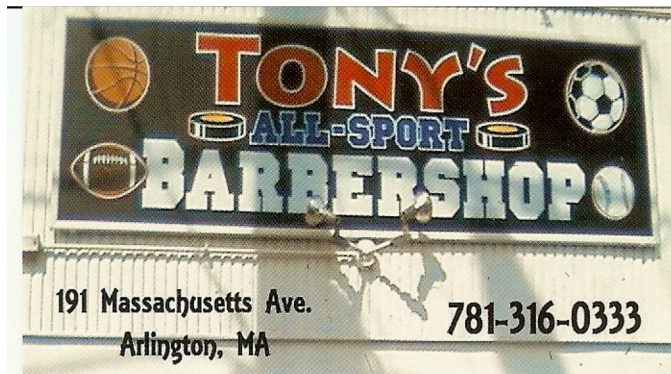
**CONTINENTALE**  
HAIR SALON

CONTINENTALE HAIR SALON  
214 MASSACHUSETTS AVE.  
ARLINGTON, MA 02474

OPEN: TUESDAY-SATURDAY  
PHONE: (781) 648.0500  
WWW.CONTINENTALEHAIRSALON.COM



1043 Mass Avenue  
Arlington, MA



**INFINITY**  
*Beauty Salon*

781-646-7269

164 MASS AVE ARLINGTON, MA 02474  
HOURS: TUESDAY - FRIDAY 9AM TO 7PM, SATURDAY 9AM TO 5PM

Arlington



[www.bigpictureframing.com](http://www.bigpictureframing.com)

1332 Massachusetts Avenue  
Arlington, MA 02475  
Tel (617) 648-1489  
Fax (617) 648-5267



a clothing boutique and design studio

Gerry Menz, Owner

781-648-0900 • [www.artweararlington.com](http://www.artweararlington.com)  
185 Massachusetts Avenue • Arlington, MA 02474



**Vincent's Barber Shop**

*Barbering done the old fashion way!*

167 Mass Avenue  
Arlington, MA 02474  
**781-646-1840**

Established 1971

**Audition for Two Great Shows  
at Theatre@First this Winter**

**TOP GIRLS**  
by Caryl Churchill

Auditions November 10 & 11  
Performances Jan 23-Feb 1

**ROSENCRANTZ AND  
GILDENSTERN  
ARE DEAD**  
by Tom Steppard

Auditions December 2 & 3  
Performances April 4-12

Auditions by appointment  
Visit [TheatreAtFirst.org](http://TheatreAtFirst.org) for more information and to sign up



Notlob Parlour Concerts  
Fall 2013 Concert Series  
See <https://sites.google.com/site/notlobmusic/>

*Today's artists*



Karen Amlaw,  
soprano



Elizabeth Anker,  
contralto



Mark McNeill,  
accompanist



Kate Meifert,  
mezzo-soprano



Sophie Michaux,  
mezzo-soprano



Sangeetha Vandeyar  
Appavoo,  
soprano



Ethan Butler,  
tenor



Marion Leeds Carroll, soprano,  
concert organizer



Lyman Opie,  
Master of Ceremonies



Miles Rind,  
bass-baritone



Kimberly States,  
soprano



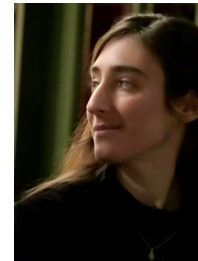
Tom Frates,  
baritone



Lauren Hansen,  
soprano



James Hay,  
accompanist



Sonya Taaffe,  
soprano



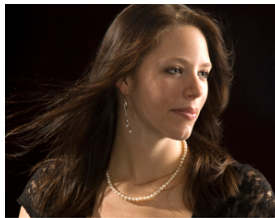
Janine Waneé,  
mezzo-soprano



Seele Musicale  
Madeline Browning, flute  
Jagan Nath Khalsa, violin  
Kristjon Imperio, piano



Jagan-Nath Khalsa,  
violin



Alyssa Koogler,  
soprano



Julie Poole Martini,  
soprano

**ARLINGTON SWIFTY PRINTING**

Brick and Mortar Store Hours: Monday through Friday 8:30 - 5:30 - Online ordering 24 Hours A Day

[Arlingtonswiftyprint.com](http://Arlingtonswiftyprint.com)